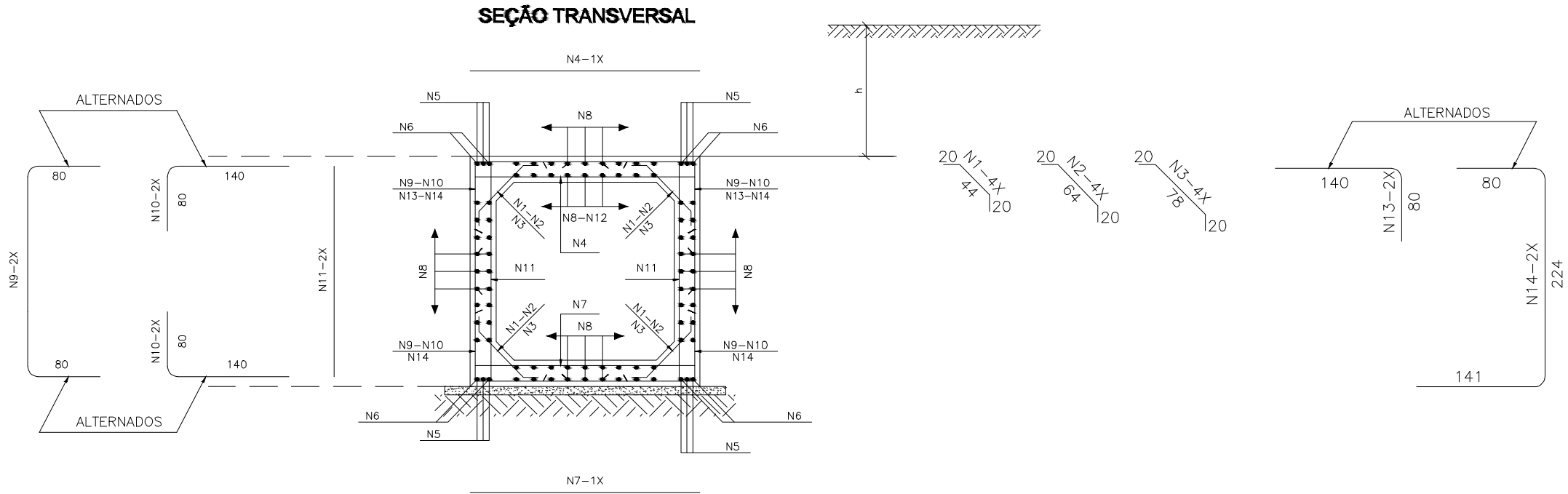


TABELA DAS ARMADURAS ( POR METRO DE GALERIA )

0 ≤ h ≤ 100					100 ≤ h ≤ 250					250 ≤ h ≤ 500					500 ≤ h ≤ 750					750 ≤ h ≤ 1000					1000 ≤ h ≤ 1250					1250 ≤ h ≤ 1500				
fs ≥ 0,09 MPa					fs ≥ 0,10 MPa					fs ≥ 0,15 MPa					fs ≥ 0,20 MPa					fs ≥ 0,25 MPa					fs ≥ 0,29 MPa					fs ≥ 0,34 MPa				
Nº	Ø	Q	COMP.	ESP.	Nº	Ø	Q	COMP.	ESP.	Nº	Ø	Q	COMP.	ESP.	Nº	Ø	Q	COMP.	ESP.	Nº	Ø	Q	COMP.	ESP.	Nº	Ø	Q	COMP.	ESP.	Nº	Ø	Q	COMP.	ESP.
1	6,3	20	84	c/20	1	6,3	20	84	c/20	1	---	---	---	---	1	---	---	---	---	1	---	---	---	---	1	---	---	---	---	1	---	---	---	---
2	---	---	---	---	2	---	---	---	---	2	6,3	20	104	c/20	2	6,3	20	104	c/20	2	---	---	---	---	2	---	---	---	---	2	---	---	---	---
3	---	---	---	---	3	---	---	---	---	3	---	---	---	---	3	---	---	---	---	3	6,3	20	118	c/20	3	6,3	20	118	c/20	3	6,3	20	118	c/20
4	12,5	6	225	c/16	4	10,0	8	225	c/13	4	10,0	10	235	c/10	4	12,5	9	235	c/11	4	12,5	10	245	c/10	4	16,0	7	245	c/13	4	16,0	9	245	c/11
5	12,5	12	CORR.	---	5	---	---	---	---	5	---	---	---	---	5	---	---	---	---	5	16,0	12	CORR.	---	5	16,0	12	CORR.	---	5	16,0	12	CORR.	---
6	---	---	---	---	6	16,0	8	CORR.	---	6	16,0	8	CORR.	---	6	16,0	8	CORR.	---	6	---	---	---	---	6	---	---	---	---	6	---	---	---	---
7	12,5	6	225	c/16	7	10,0	9	225	c/11	7	10,0	10	235	c/10	7	12,5	10	235	c/10	7	12,5	10	245	c/10	7	16,0	8	245	c/12 <sup>5</sup>	7	16,0	9	245	c/11
8	6,3	63	CORR.	c/20	8	6,3	72	CORR.	c/20	8	6,3	72	CORR.	c/20	8	6,3	72	CORR.	c/20	8	6,3	72	CORR.	c/20	8	6,3	72	CORR.	c/20	8	6,3	72	CORR.	c/20
9	---	---	---	---	9	10,0	6	385	c/34	9	10,0	7	395	c/30	9	12,5	7	395	c/30	9	12,5	6	405	c/34	9	12,5	8	405	c/24	9	12,5	10	405	c/20
10	---	---	---	---	10	10,0	12	220	c/34	10	10,0	13	220	c/30	10	12,5	13	220	c/30	10	12,5	12	220	c/34	10	12,5	17	220	c/24	10	12,5	20	220	c/20
11	6,3	10	225	c/20	11	6,3	10	225	c/20	11	6,3	13	235	c/15	11	6,3	13	235	c/15	11	6,3	20	245	c/10	11	6,3	20	245	c/10	11	6,3	20	245	c/10
12	10,0	9	CORR.	c/20	12	---	---	---	---	12	---	---	---	---	12	---	---	---	---	12	---	---	---	---	12	---	---	---	---	12	---	---	---	---
13	12,5	8	220	c/24	13	---	---	---	---	13	---	---	---	---	13	---	---	---	---	13	---	---	---	---	13	---	---	---	---	13	---	---	---	---
14	12,5	8	445	c/24	14	---	---	---	---	14	---	---	---	---	14	---	---	---	---	14	---	---	---	---	14	---	---	---	---	14	---	---	---	---
RESUMO					RESUMO					RESUMO					RESUMO					RESUMO					RESUMO					RESUMO				
Ø	Kg/m	PESO (Kg)			Ø	Kg/m	PESO (Kg)			Ø	Kg/m	PESO (Kg)			Ø	Kg/m	PESO (Kg)			Ø	Kg/m	PESO (Kg)			Ø	Kg/m	PESO (Kg)			Ø	Kg/m	PESO (Kg)		
6,3	0,252	27			6,3	0,252	29			6,3	0,252	32			6,3	0,252	32			6,3	0,252	38			6,3	0,252	38			6,3	0,252	38		
10,0	0,624	6			10,0	0,624	55			10,0	0,624	65			12,5	0,988	100			12,5	0,988	99			12,5	0,988	69			12,5	0,988	84		
12,5	0,988	93			16,0	1,570	14			16,0	1,570	14			16,0	1,570	14			16,0	1,570	21			16,0	1,570	79			16,0	1,570	90		
TOTAL		126Kg			TOTAL		98Kg			TOTAL		111Kg			TOTAL		148Kg			TOTAL		158Kg			TOTAL		186Kg			TOTAL		212Kg		



NOTA:  
- Ver notas e complementos desta no desenho 6.23

BUEIROS SIMPLES CELULARES DE CONCRETO  
ARMADURAS DO CORPO - 200x200